



# Number Portability Inter-Operator Webservice Specification

---

*Updated XXXX 2022*

<b>Document No:</b>	MCA/10/38/O
<b>Date:</b>	May 2006

## Contents

1.	SCOPE.....	2
2.	DEFINITIONS.....	3
3.	ABBREVIATIONS.....	4
4.	GENERAL DESCRIPTION .....	5
5.	AUTHORIZATION REQUEST .....	7
6.	AUTHORIZATION RESPONSE.....	9
7.	FINALISATION REQUEST .....	10
8.	FINALISATION RESPONSE .....	11
9.	INSTRUCTION REQUEST .....	12
10.	INSTRUCTION RESPONSE .....	13
11.	E164 TERMINATED .....	14
12.	PORTING ANNOUNCEMENT .....	15
13.	ABORT.....	16
14.	GET TRANSACTION STATUS.....	17
15.	GET TRANSACTIONS .....	18
16.	GET ACTIVE PORTED-IN NUMBERS .....	20
17.	GET ACTIVE PORTED-OUT NUMBERS .....	21
18.	GET CURRENT OPERATOR.....	22
19.	RESPONSE CODES.....	23
19.1.	Mobile .....	23
19.1.1.	Codes for use in the Authorisation Response .....	23
19.1.2.	Codes for use in Instruction Response.....	24
19.2.	Fixed .....	25
19.2.1.	Codes for use in the Authorisation Response .....	25
19.2.2.	Codes for use in the Finalisation Response.....	26
19.2.3.	Codes for use in the Instruction Response.....	27
20.	RETURN CODES.....	28
21.	RETRY SCHEME .....	29
21.	WSDL SPECIFICATION.....	30
22.	OPERATOR CODES.....	30

## **1. SCOPE**

This document specifies the webservice for messaging between operators of ordering number portings and announcing completed portings.

The webservice is based on the one developed for sharing directory enquiries and used open standards. Open source software is available for implementers.

This specification contains the message formats to be used for all the messages.

The circumstances in which messages are to be sent and the actions to be taken in response to messages are specified in the process and network specifications.

## 2. DEFINITIONS

**'Block Operator'** means the operator to whom the Authority allocated the number block containing the number that is being ported.

**'CLI Check'** means a check that the person applying for number porting is in possession of an active SIM that is associated with the number.

**'DDI number'** means a single number having the form of "abcdxxxx", "abcdexxx" or "abcdefxx" (known as 4+4, 5+3 and 6+2 DDI respectively) where the digits x are not used for routing in the public network. To avoid any doubts a DDI number is allocated to a single customer but represents a block of 10,000, 1,000 or 100 numbers.

**'Donor operator'** means the operator that provides service to a subscriber number before porting and includes any agents or other persons however so described acting for this operator.

**'Freephone content provider'** means any person that is party to a contract with the freephone network provider and is also the party identified by a freephone number to whom the calls are ultimately delivered. A freephone content provider pays the freephone network provider to receive calls made to freephone numbers. The calls may include normal conversational calls and calls to individual lines and call centres, and are not limited to calls to access stored content.

**'ID-Bill check'** means a check by the recipient operator that the person applying for number porting has an identification document that matches the information on a bill or statement from the donor operator.

**'Premium rate service provider (PRSP)'** means any person that is party to a contract with the premium rate terminating operator and is also the party identified by a premium rate number to whom the calls are ultimately delivered. A PRSP receives the payments from the premium rate terminating operator. The calls consist mainly of normal conversational calls or calls to access stored content.

**'Recipient operator'** means the operator that provides service to a subscriber number after porting and includes any sales agents or other persons however so described acting for this operator.

**'Subscriber'** means the legal holder of the active account who is not necessarily the user of the service associated with the number to be ported.

*Note (1): Where the term 'subscriber' is used in terms of the 'subscriber number' (i.e. the number to be ported), it shall also be understood to also include the number in a porting request raised by an applicant, i.e. a person without an active subscription.*

*Note (2): Where the term 'person' is used, it applies for both natural and legal persons, unless otherwise specified.*

**Commented [MCA1]:** Various changes and additions were included to better align the terms with the provisions of the new Regulations.

### 3. ABBREVIATIONS

ID	Identification Document (which may be Maltese identity card or driving licence, or a passport for foreign nationals)
CLI	Calling Line Identification
ISDN	Integrated Services Digital Network
PRA	Premium Rate Access of ISDN
SMS	Short Message Service
SIM	Subscriber Identity Module
SOAP	Simple Object Access Protocol
WSDL	Web Services Description Languages

**Commented [MCA2]:** Various additions to the list of abbreviations, and a change in the definition of "ID" to reflect the inclusion of one other valid identification document.

#### 4. GENERAL DESCRIPTION

Web services will be the technology used to enable both parties to communicate and share information, and the technology was also used to develop an inter-operator directory information sharing system. The web service must comply with the SOAP 1.1 standard. A web service is invoked by calling one of its public functions, passing the parameters and expecting a result. If the calling party does not receive an acknowledgement after a period of sixty (60) seconds, the function is considered as not being called successfully, and the function can be called again with the same parameters.

Figure 1 illustrates the underlying infrastructure and protocols which will be implemented.

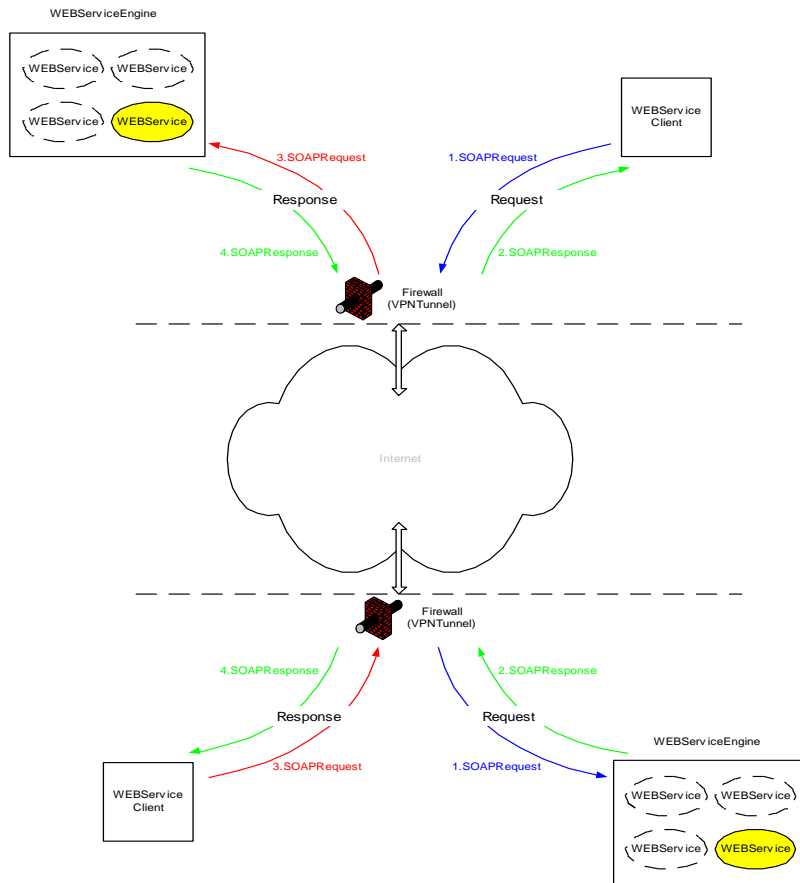


Figure 1- Network Infrastructure

When a process such as the porting in of a number involves more than one function call, all functions will be related to the same Transaction Identifier. The recipient operator is responsible of generating a unique (non-used) transaction identifier (Note: The transaction identifier should not necessary be unique for all operators), whilst the donor operator is responsible of returning a result with the same transaction identifier. In the case of resubmissions, the same transaction identifier may be used. The transaction identifier is defined to be an 8-byte number allowing a large interval before wrapping up and starting from zero again.

## 5. AUTHORIZATION REQUEST

Used for ~~both fixed and mobile~~ portings

**Commented [MCA3]:** Change since this also applies to DDI, freephone and PRS numbers.

*Function name:* authorizationRequest

*Description:* Called by the recipient operator to start the authorization process

*Input Parameters:*

transactionId	Long	An incrementing sequence number, which uniquely identifies a complete transaction and is prefixed by the Recipient Operator Code. The recipient operator is responsible for generating a correct sequence number.
recipientOperator	Integer	Recipient Operator code – This field represents the sender of the request. Refer to Section 22.
donorOperator	Integer	Donor Operator code – This field represents the receiver of the request. Refer to Section 22.
dateTime	String	Date and time of operation in the format YYYYMMDDHH24MMSS  NB: The hours are expressed using the 24-hour clock but the "24" is not included in the encoding, e.g. 24 June 2005 at 19:30:26 will be shown as 20050624193026.
E.164 number	String	The 8-digit subscriber number to be ported or the 4, 5 or 6 digit DDI number. DDI numbers shall be coded "DDInnnn" for a 4-digit number, "DDInnnnn" for a 5-digit number or "DDInnnnnn" for a 6-digit number.
Customer Reference Number	String	The ID/passport number of the subscriber or legal representative.
accountType	Integer	One of the following values: 1 – Mobile Pre-paid 2 – Mobile Post-paid single line account held by a natural person 3 – Mobile Post-paid single line account held by an entity other than a natural person 4 – Mobile Post-paid multi-line account held by a natural person 5 – Mobile Post-paid multi-line account held by an entity other than a natural person 7 - Fixed Personal account 8 - Fixed account held by an entity other than a natural person 9 – Mobile DDI 10 - Individual numbers on analogue and ISDN BRA (or its SIP equivalent) 11 - Individual numbers on ISDN PRA (or its SIP equivalent) 12 - DDI numbers on ISDN PRA (or its SIP equivalent)



accountNumber	String	Filled in only for post-paid clients with the contract number as displayed on the bill
checksPassed	Integer	One of the following values: 1 - Mobile None 2 - Mobile CLI Check passed 3 - Mobile ID Bill Check passed 4 - Fixed (no meaning)
extraInformation	String	A free form field that is not used for processing the request, but should be returned as is in the Authorization Response message.

*Output Parameters:*

An ~~positive~~ integer is returned having one the following values: 0, 1, 2, 3, 4, 5, 6, 11, 12, 14 or -1. (refer to Section 20 for details)

**Commented [MCA4]:** Proposed change since -1 is not a positive integer. Unless there is a reason to retain positive, the MCA will replace all references to "positive" integer in this document.

## 6. AUTHORIZATION RESPONSE

Used for ~~both fixed and mobile~~ portings

*Function name:* authorizationResponse

*Description:* Called by the donor operator to complete the authorization process

*Input Parameters:*

transactionId	Long	The sequence number, which uniquely identifies a complete transaction and is prefixed by the Recipient Operator Code. This should be the same transaction identifier as the one sent in the Authorization Request.
recipientOperator	Integer	Recipient Operator code – This field represents the receiver of the response. Refer to Section 22.
donorOperator	Integer	Donor Operator code – This field represents the sender of the response. Refer to Section 22.
dateTime	String	Date and time of operation in the format YYYYMMDDHH24MMSS (see note in Section 5)
E.164 number	String	The 8-digit subscriber number to be ported or the 4, 5 or 6 digit DDI number. DDI numbers shall be coded "DDInnnn" for a 4-digit number, "DDInnnnn" for a 5-digit number or "DDInnnnnn" for a 6-digit number.
ResponseCode	Integer	Stores the response of the Authorization Request from one of the error codes in Section 19.
ExtraInformation	String	A free form field that is not used for processing the request, but should be returned <del>as is</del> in the Authorization Response message <u>as received in the Authorization Request message</u> .

*Output Parameters:*

A ~~positive~~ integer is returned having one the following values: 0, 1, 2, 3, 4, 6, 7, 8, 11, 12, 14 or -1. (refer to Section 20 for details)

## 7. FINALISATION REQUEST

Not used for ~~fixed-mobile~~ portings only.

**Commented [MCA5]:** Change needed since this section applies also to the porting of DDI, freephone and PRS numbers.

*Function name:* finalisationRequest

*Description:* Called by the recipient operator to start the finalisation phase

*Input Parameters:*

transactionId	Long	The sequence number, which uniquely identifies a complete transaction and is prefixed by the Recipient Operator Code. This should be the same transaction identifier as the one sent in the Authorization Response.
recipientOperator	Integer	Recipient Operator code. Refer to Section 22.
donorOperator	Integer	Donor Operator code. Refer to Section 22.
dateTime	String	Date and time of operation in the format YYYYMMDDHH24MMSS (see note in Section 5)
E.164 Number	String	The 8-digit subscriber number to be ported or the 4, 5 or 6 digit DDI number. DDI numbers shall be coded "DDInnnn" for a 4-digit number, "DDInnnnn" for a 5-digit number or "DDInnnnnn" for a 6-digit number.
extraInformation	String	A free form field that is not used for processing the request, but should be returned as is in the <b>Authorization Finalisation</b> Response message.

*Output Parameters:*

An ~~positive~~ integer is returned having one of the following values: 0, 1, 2, 3, 4, 6, 11, 12, 14 or -1. (refer to Section 20 for details)

## 8. FINALISATION RESPONSE

~~Not used~~ for ~~fixed-mobile~~ portings only.

*Function name:* finalisationResponse

*Description:* Called by the donor operator to complete the finalisation phase

*Input Parameters:*

transactionId	Long	The sequence number, which uniquely identifies a complete transaction and is prefixed by the Recipient Operator Code. This should be the same transaction identifier as the one sent in the Instruction Request.
recipientOperator	Integer	Recipient Operator code. Refer to Section 22.
donorOperator	Integer	Donor Operator code. Refer to Section 22.
dateTime	String	Date and time of operation in the format YYYYMMDDHH24MMSS (see note in Section 5)
E.164 number	String	The 8-digit subscriber number to be ported or the 4, 5 or 6 digit DDI number. DDI numbers shall be coded "DDInnnn" for a 4-digit number, "DDInnnnn" for a 5-digit number or "DDInnnnnn" for a 6-digit number.
ResponseCode	Integer	Stores the response of the Instruction Request from one of the error codes in Section 19.
ExtraInformation	String	A free form field that is not used for processing the request, but should be returned <del>as is</del> in the Finalisation Response message <u>as received in the Finalisation Request message</u> .

*Output Parameters:*

An ~~positive~~ integer is returned having one the following values: 0, 1, 2, 3, 4, 6, 8, 11, 12, 14 or -1. (refer to Section 20 for details)

## 9. INSTRUCTION REQUEST

Used for ~~both fixed and mobile~~ portings

*Function name:* instructionRequest

*Description:* Called by the recipient operator to start the instruction phase

*Input Parameters:*

transactionId	Long	The sequence number, which uniquely identifies a complete transaction and is prefixed by the Recipient Operator Code. This should be the same transaction identifier as the one sent in the Authorization Response.
recipientOperator	Integer	Recipient Operator code – This field represents the sender of the request. Refer to Section 22.
donorOperator	Integer	Donor Operator code – This field represents the receiver of the request. Refer to Section 22.
dateTime	String	Date and time of operation in the format YYYYMMDDHH24MMSS (see note in Section 5)
E.164 Number	String	The 8-digit subscriber number to be ported or the 4, 5 or 6 digit DDI number. DDI numbers shall be coded "DDInnnn" for a 4-digit number, "DDInnnnn" for a 5-digit number or "DDInnnnnn" for a 6-digit number.
extraInformation	String	A free form field that is not used for processing the request, but should be returned as is in the <b>authorization Instruction</b> Response message.

*Output Parameters:*

An ~~positive~~-integer is returned having one the following values: 0, 1, 2, 3, 4, 6, 11, 12, 14 or -1. (refer to Section 20 for details)

## 10. INSTRUCTION RESPONSE

Used for ~~both fixed and mobile~~ portings

*Function name:* instructionResponse

*Description:* Called by the donor operator to complete the instruction process

*Input Parameters:*

transactionId	Long	The sequence number, which uniquely identifies a complete transaction and is prefixed by the Recipient Operator Code. This should be the same transaction identifier as the one sent in the Instruction Request.
recipientOperator	Integer	Recipient Operator code – This field represents the receiver of the response. Refer to Section 22.
donorOperator	Integer	Donor Operator code – This field represents the sender of the response. Refer to Section 22.
dateTime	String	Date and time of operation in the format YYYYMMDDHH24MMSS (see note in Section 5)
E.164 number	String	The 8-digit subscriber number to be ported or the 4, 5 or 6 digit DDI number. DDI numbers shall be coded "DDInnnn" for a 4-digit number, "DDInnnnn" for a 5-digit number or "DDInnnnnn" for a 6-digit number.
ResponseCode	Integer	Stores the response of the Instruction Request from one of the error codes in Section 19.
ExtraInformation	String	A free form field that is not used for processing the request, but should be returned <del>as is</del> in the <b>authorization Instruction #Response</b> message <b>as received in the Instruction Request message</b> .

*Output Parameters:*

A ~~positive~~ integer is returned having one the following values: 0, 1, 2, 3, 4, 6, 8, 11, 12, 14 or -1. (refer to Section 20 for details)

## 11. E164 TERMINATED

Used for ~~both fixed and mobile~~ portings

*Function name:* e164Terminated

*Description:* Called by the recipient operator when the ported in number has been terminated on the recipient operator network. The recipient operator must call this function on all other network operators.

*Input Parameters:*

transactionId	Long	The sequence number, which uniquely identifies this transaction.
recipientOperator	Integer	Recipient Operator code. Refer to Section 22.
donorOperator	Integer	Donor Operator code. Refer to Section 22.
blockOperator	Integer	Block Operator code. Refer to Section 22.
dateTime	String	Date and time of operation in the format YYYYMMDDHH24MMSS (see note in Section 5)
E.164 Number	String	The 8-digit subscriber number to be ported or the 4, 5 or 6 digit DDI number. DDI numbers shall be coded "DDInnnn" for a 4-digit number, "DDInnnnn" for a 5-digit number or "DDInnnnnn" for a 6-digit number.

*Output Parameters:*

An ~~positive~~ integer is returned per operator called having one the following values: 0, 1, 2, 3, 4, 6, 10, 11, 12, 14 or -1 (refer to Section 20 for details).

## 12. PORTING ANNOUNCEMENT

Used for ~~both fixed and mobile~~ all portings

*Function name:* portingAnnouncement

*Description:* Called by the recipient operator when the porting has been completed to allow other operators to start to update their routing and charging. The recipient operator must call this function on all other network operators.

*Input Parameters:*

transactionId	Long	The sequence number, which uniquely identifies this transaction.
recipientOperator	Integer	Recipient Operator code. Refer to Section 22.
donorOperator	Integer	Donor Operator code. Refer to Section 22.
blockOperator	Integer	Block Operator code. Refer to Section 22.
dateTime	String	Date and time of operation in the format YYYYMMDDHH24MMSS (see note in Section 5)
E.164 Number	String	The 8-digit subscriber number to be ported or the 4, 5 or 6 digit DDI number. DDI numbers shall be coded "DDInnnn" for a 4-digit number, "DDInnnnn" for a 5-digit number or "DDInnnnnn" for a 6-digit number.

*Output Parameters:*

An ~~positive~~ integer is returned per operator called having one the following values: 0, 1, 2, 3, 4, 6, 10, 11, 12, 14 or -1. (refer to Section 20 for details)



### 13. ABORT

Used for ~~both fixed and mobile~~all portings

*Function name:* Abort

*Description:* Called by the recipient operator to cancel the porting process

*Input Parameters:*

transactionId	Long	An incrementing sequence number, which uniquely identifies a complete transaction and is prefixed by the Recipient Operator Code. The recipient operator is responsible for generating a correct sequence number.
recipientOperator	Integer	Recipient Operator code – This field represents the sender of the request. Refer to Section 22.
donorOperator	Integer	Donor Operator code – This field represents the receiver of the request. Refer to Section 22.
dateTime	String	Date and time of operation in the format YYYYMMDDHH24MMSS (see note in Section 5)  NB: The hours are expressed using the 24-hour clock but the "24" is not included in the encoding, e.g. 24 June 2005 at 19:30:26 will be shown as 20050624193026.
E.164 number	String	The 8-digit subscriber number to be ported or the 4, 5 or 6 digit DDI number. DDI numbers shall be coded "DDInnnn" for a 4-digit number, "DDInnnnn" for a 5-digit number or "DDInnnnnn" for a 6-digit number.

*Output Parameters:*

An ~~positive~~-integer is returned having one the following values: 0, 1, 2, 3, 8, 11, 12, 13, 14 or -1. (refer to Section 20 for details)

## 14. GET TRANSACTION STATUS

Used for ~~both fixed and mobile~~ portings

*Function name:* getTransactionStatus

*Description:* Called by the recipient operator to query the status of a transaction. Only porting transactions can be queried i.e. excluding termination and reporting transactions.

*Input Parameters:*

transactionId	Long	The sequence number, which uniquely identifies this transaction.
recipientOperator	Integer	Recipient Operator code. Refer to Section 22.
donorOperator	Integer	Donor Operator code. Refer to Section 22.
dateTime	String	Date and time of operation in the format YYYYMMDDHH24MMSS (see note in Section 5)
requestTransactionId	String	The transaction identifier on which status information is required.

*Output Parameters:*

A ~~positive~~ integer is returned having one the following values: 1, 2, 3, 8, 11, 12, 21, 22, 23, 24, 25, 26, 27 or -1. (refer to Section 20 for details)

## 15. GET TRANSACTIONS

Used for ~~both fixed and mobile~~ portings

*Function name:* getTransactions

*Description:* Called by the recipient operator and/or donor operator to retrieve all the transactions done between the recipient operator and donor operator for a specified time period. Time period must not exceed a month. In order to minimize the traffic overheads, a limit of 100 such queries per operator per day is imposed.

*Input Parameters:*

transactionId	Long	The sequence number, which uniquely identifies this transaction.
recipientOperator	Integer	Recipient Operator code. Refer to Section 22.
donorOperator	Integer	Donor Operator code. Refer to Section 22.
dateTime	String	Date and time of operation in the format YYYYMMDDHH24MMSS (see note in Section 5)
requestStartTime	String	The start time of the range required in the format YYYYMMDDHH24MMSS (see note in Section 5)
requestEndTime	String	The end time of the range required in the format YYYYMMDDHH24MMSS (see note in Section 5)
Type	Integer	The type of transactions to be returned, which can be one of the following values: 01 – Entire transactions (02 to 08) 02 – Authorization Requests only 03 – Authorization Responses only 04 – Finalisation Requests only 05 – Finalisation Responses only 06 – Instruction Requests only 07 – Instruction Responses only 08 – Porting Announcements only 09 – Terminations only 10 – Ported In Numbers (on the recipient's network) 11 – Ported Out Numbers (on the donor's network)

*Output Parameters:*

As a result, a list of ReportObject is returned. Each ReportObject stands for one transaction (or part of). The ReportObject is composed of the following fields:

transactionId	Long	The sequence number, which uniquely identifies this transaction.
recipientOperator	Integer	Recipient Operator code. Refer to Section 22.
donorOperator	Integer	Donor Operator code. Refer to Section 22.
dateTime	String	Date and time of operation in the format YYYYMMDDHH24MMSS (see note in Section 5)
Type	Integer	The type of transaction which can be one of the following values: 02 – Authorization Request 03 – Authorization Response 04 – Finalisation Request 05 – Finalisation Response 06 – Instruction Request 07 – Instruction Response 08 – Porting Announcement 09 – Termination
E.164 Number	String	The 8-digit subscriber number to be ported or the 4, 5 or 6 digit DDI number. DDI numbers shall be coded "DDInnnn" for a 4-digit number, "DDInnnnn" for a 5-digit number or "DDInnnnnn" for a 6-digit number. Only returned for types 2, 3, 4, 5, 7 and 8. For type 6 (termination) it is the 8-digit number that is terminated.
customerReferenceNumber	String	Only returned for type 2
accountType	Integer	Only returned for type 2
accountNumber	String	Only returned for type 2
responseCode	Integer	Only returned for type 3 and 5
ChecksPassed	Integer	Only returned for type 2

When an operator does not have any data to return, an empty array is returned.

When an error occurs, such as when a parameter is sent in an incorrect format, a null object is returned.

## 16. GET ACTIVE PORTED-IN NUMBERS

Used for ~~both fixed and mobile~~ portings

*Function name:* getActivePortedInNumbers

*Description:* Called by any operator to query the current **ported-in** numbers on another operator's network. In order to minimize the traffic overheads, a limit of 10 such queries per day is imposed, and queries shall only be served between 5pm and 8am daily,

*Input Parameters:*

transactionId	Long	The sequence number, which uniquely identifies this transaction.
requestOperator	Integer	Operator code of operator requesting the data. Refer to Section 22.
serviceOperator	Integer	Operator code of the operator servicing the request. Refer to Section 22.
DateTime	String	Date and time of request in the format YYYYMMDDHH24MMSS (see note in Section 5)

*Output Parameters:*

An array of String objects is returned representing the list of ported in numbers on the network in 8-digit format, or 4, 5 or 6 digit format in case of DDI.

When an operator does not have any active ported-in numbers, an empty array is returned.

When an error occurs, such as when a parameter is sent in an incorrect format, a null object is returned.

**Commented [MCA6]:** It is unclear how an exclusively 4-digit format in case of DDI would be sufficient for the purposes of obtaining the list of ported-in numbers, considering that there are also 5+3 and 6+2 DDI formats.

To cater for the possibility of porting such 5+3 and 6+2 DDI numbers the addition of 5- and 6-digit format is being proposed. Possibly these could be different output files for ease of processing.

Alternatively, the same approach adopted for the **getActivePortedOutNumbers** function could be considered, wherein the output parameter returned is "an array of PortedOutNumber objects" containing two fields, with one of these clearly referring to 4-, 5- and 6-digit formats for DDI.

Providers of voice communications services are invited to provide their comments on the proposed addition and the observations above.

## 17. GET ACTIVE PORTED-OUT NUMBERS

Used for ~~both fixed and mobile~~ portings

*Function name:* getActivePortedOutNumbers

*Description:* Called by any operator to query the current ported-out numbers on a Block operator's network. In order to minimize the traffic overheads, a limit of 10 such queries per operator per day is imposed, and queries shall only be served between 5pm and 8am daily.

*Input Parameters:*

transactionId	Long	The sequence number, which uniquely identifies this transaction.
requestOperator	Integer	Operator code of operator requesting the data. Refer to Section 22.
blockOperator	Integer	Operator code of the block operator servicing the request. Refer to Section 22.
DateTime	String	Date and time of request in the format YYYYMMDDHH24MMSS (see note in Section 5)

*Output Parameters:*

An array of PortedOutNumber objects is returned. PortedOutNumber is defined as an object containing the following fields:

E.164 Number	String	The 8-digit subscriber number to be ported or the 4, 5 or 6 digit DDI number. DDI numbers shall be coded "DDInnnn" for a 4-digit number, "DDInnnnn" for a 5-digit number or "DDInnnnnn" for a 6-digit number.
Current operator	Integer	Operator code of operator servicing the data. Refer to Section 22.

When an operator does not have any active ported-out numbers, an empty array is returned.

When an error occurs, such as when a parameter is sent in an incorrect format, a null object is returned.

## 18. GET CURRENT OPERATOR

Used for ~~both fixed and mobile~~ portings.

Note: This function is for synchronising data between operators for a single number, and is **not** to be used in conjunction with tariff transparency.

*Function name:* getCurrentOperator

*Description:* Called by any operator to query the other network's active route for a particular number.

*Input Parameters:*

transactionId	Long	The sequence number, which uniquely identifies this transaction.
requestOperator	Integer	Operator code of operator requesting the data. Refer to Section 22.
serviceOperator	Integer	Operator code of operator servicing the request. Refer to Section 22.
dateTime	String	Date and time of request in the format YYYYMMDDHH24MMSS (see note in Section 5)
E.164 Number	String	The 8-digit subscriber number to be ported or the 4, 5 or 6 digit DDI number. DDI numbers shall be coded "DDInnnn" for a 4-digit number, "DDInnnnn" for a 5-digit number or "DDInnnnnn" for a 6-digit number.

*Output Parameters:*

An integer indicating the current terminating operator is returned. The integer must be one of the specified operator codes.

When an error occurs, such as when a parameter is sent in an incorrect format, an integer value of -1 is returned.

## 19. RESPONSE CODES

### 19.1. Mobile

#### 19.1.1. Codes for use in the Authorisation Response

- 00 - Request accepted.
- 01 - The system is currently unavailable. Please try again later.
- 02 - Request rejected because number to be ported is not a valid number for a subscriber on the Donor Operator's network. ~~(NB: In the case of prepaid where the subscriber's number is being held under a grace period, porting shall be allowed up to one week before the end of the grace period)~~
- 03 - Request rejected because phone is blocked as it was stolen or lost.
- 04 - Request rejected because the subscriber has an outstanding bill or dues on a telephone set that has not been paid within the normal period allowed.
- 05 - Request rejected because the subscriber is already subject to suspension of outgoing or incoming calls because of failure to pay a bill.
- 06 - Request rejected because the number is already subject to a porting process.
- 07 - Request rejected because the number has already been ported in the last two months.
- 08 - Request rejected because there are identified auxiliary services still active on the number.
- 09 - Request rejected because the classification of the account does not match, e.g. a request is made under the pre-paid procedure for a post-paid account.
- 10 - Request rejected because for pre-paid the recipient operator did not send both the ID number and confirm-CLI, or for post-paid the recipient operator did not send the ID number and ID-Bill check, (as applicable).
- 11 - Request rejected because an account number was not sent.
- 12 - Request rejected because CLI check not passed.
- 13 - Request rejected because the ID/Passport Number does not match the number held by the donor operator.
- 14 - Request rejected because account number match fails.
- 15 - Request rejected because donor does not have and cannot obtain ID/Passport Number to match to ID/Passport Number sent.
- 16 - Request rejected because the necessary documents (authorisation letter, porting form, copy of Identification Document) have not been received.
- 17 - Request rejected because the porting form has been received and is not signed or there is a severe mismatch with the donor's records.

**Commented [MCA7]:** This is now redundant given the right to request porting after contract termination.



- 18 - Request rejected because the signature / ID is not of the legal representative according to the Malta Business Registry (MBR).
- 19 - Request rejected as it is a special case requiring discussion (NB: This code is only to be used when there is no other specific code and should be used on very rare occasions).
- 20 - Request rejected because electronic details and porting form do not match.
- 21 - Request rejected because credit limit for post-paid subscriber has been exceeded.
- 22 - Duplicate transaction identifier (i.e. request has already been sent)
- 23 - Request rejected because the account is the pre-paid account of a person under 18 years old and consent of the parent or guardian is required and has not been given
- 24 - Request to be processed during the next working day since MNP Quota has been reached
- 25 - Request rejected because the porting form submitted is back dated by more than four weeks
- 26 - Request rejected because the donor has not been able to match the number to be ported in the Authorisation Request with the CLI of an SMS received on 1811.
- 27 - Request rejected because more than one month has elapsed since the subscription associated with the number to be ported was terminated.
- 28 - Request rejected because the subscriber formerly assigned this number had renounced the right to request porting when terminating his/her subscription.

### **19.1.2. Codes for use in Instruction Response**

- 30 - Instruction completed.
- 31 - The system is currently unavailable. Please try again later.
- 32 - Instruction rejected because number to be ported is not the subject of an Authorisation Request made and accepted in the Authorisation Phase. (NB: This includes the number not being a valid number).
- 33 - Instruction rejected because the number has already been ported under the same acceptance (i.e. the Instruction Request has been sent more than once in error).
- 34 - Instruction rejected because service has been suspended due to debt problems since the Authorisation Request was accepted.
- 35 - Instruction rejected because the SIM associated with the number to be ported has been stolen/lost since the Authorisation Request was accepted.

- 36 - Instruction rejected because the Instruction Request was received by the Recipient Operator more than 3 hrs elapsed from when the aAuthorisation rResponse was sent.
- 37 - Instruction rejected for other reasons that require discussion between the operators.
- 38 - Instruction rejected because recipient operator is not the same as in the Authorisation Request.
- 39 - Instruction rejected because the donor operator is not the same as in Authorisation Request.
- 40 - Duplicate transaction identifier (i.e. Instruction Request has already been sent).

## **19.2. Fixed**

### **19.2.1. Codes for use in the Authorisation Response**

- 40 - Request accepted.
- 41 - Request could not be processed, please resend tomorrow.
- 42 - Request rejected because number to be ported is not a valid number for Subscriber / freephone content provider / premium rate service provider in the Donor Operator's network.
- 43 - Request rejected because in the case of post-paid accounts, the Subscriber / freephone content provider / premium rate service provider has an outstanding bill that has not been paid within the normal period allowed.
- 44 - Request rejected because the Subscriber / freephone content provider / premium rate service provider is already subject to suspension of outgoing or incoming calls because of failure to pay a bill.
- 45 - Request rejected because the numbers are already subject to a porting process.
- ~~46 - Request rejected because number to be ported associated with an ADSL service.~~
- 47 - Request rejected because number to be ported associated with a Carelink service.
- 48 - Request rejected because the person signing the Porting Form is not the Subscriber / freephone content provider / premium rate service provider (or his authorised representative) who holds the account with the Donor Operator.
- 49 - Request rejected because the account number in the request is not the account number used by the Donor Operator for the number for which porting is requested.
- 50 - Request rejected because ID number in request does not match ID number held by Donor Operator (i.e. there is a real mismatch for the same form of identity, e.g. ID number does not match ID number or passport number does not match passport number).

**Commented [MCA8]:** Providers of fixed voice communications services are invited to comment on whether this condition still applies. If not, Code 47 would be struck-through (like Code 46).

- 51 - Request rejected because of other **non**-permitted mismatches between the identification document details sent and the information held by the Donor Operator or the request form.
  - 52 - Request rejected because the documents to be attached to the email corresponding to the porting request have not been received.
  - 53 - Request rejected in the case where the number to be ported is associated with a service whose conditions of contract require a minimum spend within a specified period in lieu of paying periodic rental charges.
  - 54 - Request rejected because the number has already been ported in the last two months.
  - 55 - Request rejected because the porting form submitted is back dated by more than four weeks.
  - 56 - Request rejected because more than one month has elapsed since the subscription associated with the number to be ported was terminated.
  - 57 - Request rejected because the subscriber / freephone content provider / premium rate service provider formerly assigned this number had renounced the right to request porting when terminating his/her subscription.
- 58-59 - Unused

**Commented [MCA9]:** We understand that the intended meaning here was that the rejection would be due to other NON-permitted mismatches, as opposed to permitted mismatches.

### 19.2.2. Codes for use in the Finalisation Response

- 60 - Finalisation completed.
  - 61 - Finalisation could not be processed, please resend tomorrow.
  - 62 - Finalisation rejected because the Finalisation Request message is received too late.
  - 63 - Finalisation rejected because the number has already been ported under the same acceptance (i.e. the instruction has been sent more than once in error).
  - 64 - Finalisation rejected because service on the numbers to be ported has been suspended due to payment problems since the Authorisation Request was accepted.
  - 65 - Finalisation rejected because a bill, which was not overdue when the Authorisation Response message was sent, has since become overdue.
  - 66 - Finalisation rejected because the subscriber has not arranged an appointment or paid his/her bill within the 15 day period allowed.
  - 67 - Finalisation rejected because of other reasons which apply that require discussion between the operators (NB: This code is only to be used when there is no other specific code and should be used on very rare occasions).
- 68-69 - Unused

**Commented [MCA10]:** The reference to the instruction request is not clear. Fixed voice communications services providers, freephone network providers and premium rate termination operators are invited to comment on what response code 63 is actually being used for.

### 19.2.3. Codes for use in the Instruction Response

- 70 - Instruction accepted, account deactivated, onward routing applied ([as applicable](#)).
- 71 - Instruction could not be processed, please resend tomorrow.
- 72 - Instruction rejected because the Instruction Request is received too late.
- 73 - Instruction rejected because the number has already been ported under the same acceptance (i.e. the Instruction Request has been sent more than once in error).
- 74 - Instruction rejected because of other reasons which apply that require discussion between the operators (NB: This code is only to be used when there is no other specific code and should be used on very rare occasions).
- 75 - WLR subscriber disconnected onward routing applied (used only between the WLR operator and its access network operator).
- 76-79 - Unused

## 20. RETURN CODES

- 1: System unavailable
- 0: Request received successfully and all data validation checks have passed
- 1: Invalid Recipient Operator Code i.e. not a value from the operator list or, except for messages sent to all networks, porting to the given network is not allowed (e.g. mobile to fixed)
- 2: Invalid Donor Operator Code i.e. not a value from the operator list or, except for messages sent to all networks, porting to the given network is not allowed (e.g. mobile to fixed)
- 3: Invalid Date & Time format
- 4: Invalid Transaction identifier i.e. non-numeric positive number
- 5: Invalid Account Type i.e. not a value from the account type list
- 6: Invalid E.164 format
- 7: Invalid response code i.e. not a value from the response code list
- 8: Unknown Request Transaction identifier
- 9: Invalid Transaction Type
- 10: Invalid Block Operator Code i.e. not a value from the operator list)
- 11: Incorrect Recipient Operator Code i.e. the code is a valid code from the operator list for operators with whom porting is authorised but the value is inconsistent with other information about the porting and believed to be incorrect
- 12: Incorrect Donor Operator Code i.e. the code is a valid code from the operator list for operators with whom porting is authorised but the value is inconsistent with other information about the porting and believed to be incorrect
- 13: E.164 number inconsistent with Transaction identifier
- 14: Message out of sequence
- 20: (Withdrawn, was INITIAL Status but this code is not needed as if a GetTransactionStatus is received before a AuthorisationRequest then the donor should respond with code 4 - Invalid Transaction identifier)
- 21: AUTHORIZATION Status: Donor has received Authorisation Request but not yet sent Authorisation Response
- 22: WAITING 1 Status: Donor has sent Authorisation Response and is waiting for Instruction Response
- 23: INSTRUCTION Status: Donor has received Instruction Request but not yet sent Instruction Response
- 24: COMPLETED Status: Donor has sent Instruction Response(MNP) or Finalisation Response (FNP)
- 25: ABORTED Status: Donor has received an Abort message
- 26: WAITING 2 Status: Donor has sent Instruction Response and is waiting for Finalisation Request
- 27: FINALISATION Status: Donor has received Finalisation Request but not yet sent Finalisation Response

## 21. RETRY SCHEME

The retry scheme is applicable only to the following methods:

- e164Terminated
- PortingAnnouncement

When one of the above methods is called, the recipient operator should deliver the request to all operators. If any operator does not respond with a successful return code, the recipient operator is obliged to retry the request to the respective operator.

The recipient operator will attempt a maximum of 3 retries every 1.5 hours. Then after the recipient operator should seek some alternative means how to communicate the request to the respective operator. Possible means include email, fax, etc. Ultimately, all operators should have updated their routing by 22:00 hours of the same day the request was dispatched.

## 21. WSDL SPECIFICATION

Each operator shall provide to all other operators its WSDL specification.

The WSDL specifications shall have the following properties:

The target namespace shall be: **http://mnp.com.mt**

The binding port shall be:

```
<wsdl:service name="MNPIInterconnectGatewayService">
  <wsdl:port binding="impl:MNPIInterconnectGatewaySoapBinding"
    name="MNPIInterconnectGateway">
    <wsdlsoap:address
      location="<host>/mnp/services/MNPIInterconnectGateway" />
  </wsdl:port>
```

The binding style shall be:

```
<wsdlsoap:binding style="rpc"
  transport="http://schemas.xmlsoap.org/soap/http" />
```

## 22. OPERATOR CODES

The following operator codes shall be used when exchanging messages through the web service platform. These have been grouped into two groups, Mobile and Fixed operators respectively.

- Mobile Operators
  - epic: 1
  - GO: 2
  - Melita: 8
- Fixed Operators
  - GO: 3
  - Melita: 5
  - epic: 7
  - Vanilla Telecoms: 13